

Product Information

Product Brand: Roto NT

Anti-slam device PowerHinge



Related Products

Roto NT
New product

Scope

Anti-slam device for independently closing wood/aluminum windows with hinge side PowerHinge

Hardware axis 13 mm with rebate depth minimum 24 mm.

Installation with centre lock 200 1P or 1V below sash stay corner drive.

Technical Details

Wood/aluminum windows have such an unfavorable center of gravity that tilted 'tilt-and-turn' sashes with hinge side PowerHinge can close by themselves.

This effect occurs when the center of gravity of the glass exceeds the value of 33 mm (measured from the sash overlap), which is a common value for many wood/aluminum profiles.

Reason for this effect is the tilt width of 80 mm, that ensures the ease of operation when dealing with high, large and heavy sashes.

The installation of an anti-slam device prevents the independent closing of the sash.

Note: PI 19 1606 replaces PI 17 2183.

Installation:

1. Place the drilling jig at the upper rebate corner (see Fig. 1)
2. Drill two holes with \varnothing 3 mm for the positioning of the anti-slam device (see Fig. 1)
3. Screw together anti-slam device for PowerHinge - lever points upwards (see Fig. 2)
4. The lever must move freely

5. In case the lever touches the frame profile, the packer 808778 can be used optional, e.g. for soft woods

The anti-slam device can also be retrofitted:

To do this, replace centre lock 200 1E below the sash stay corner drive with centre lock 200 1P or 1V; remove the existing striker and replace it with the anti-slam device.

Availability / Ordering ability

Available from the beginning of December 2020.

Product Overview

Material No.	EAN no.	Description	PU	Price/Pcs.	Material Si ze	D-MG	Spout Mater ial
823438	4036263420251	NT ZSS PH R	40		20		
823439	4036263420268	NT ZSS PH L	40		20		
840139	4036263471109	BOHRLEHRE ZSS PH	1		02		
808778	4036263378231	UNL F SPALTLUEFTER IC 2,0MM	100		20		

More Pictures:

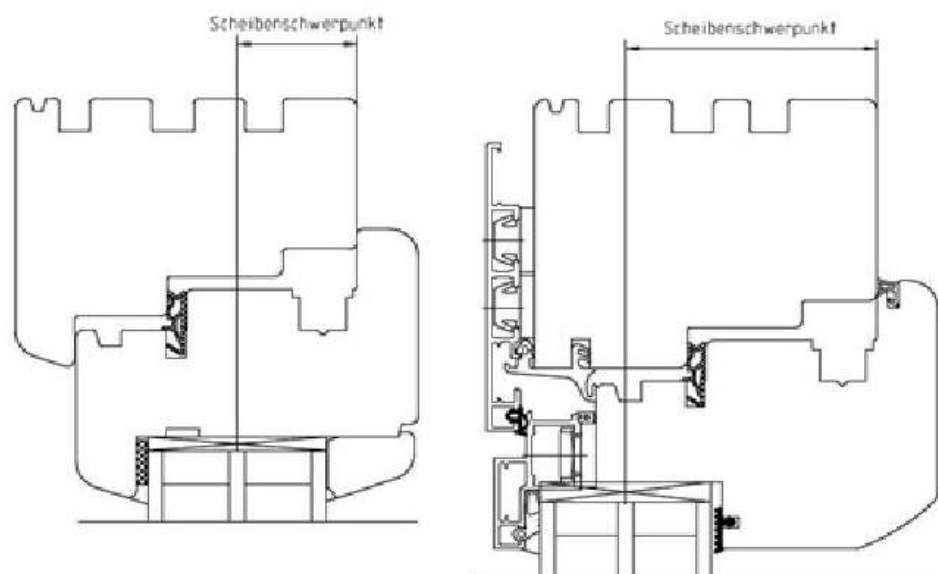


Bild 1:

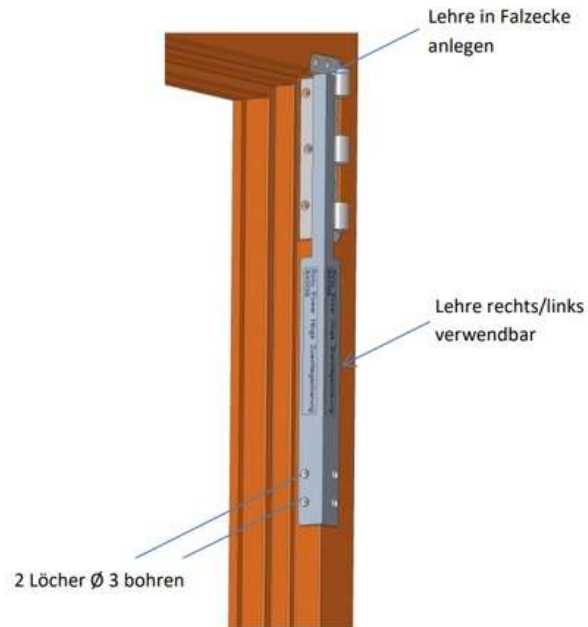
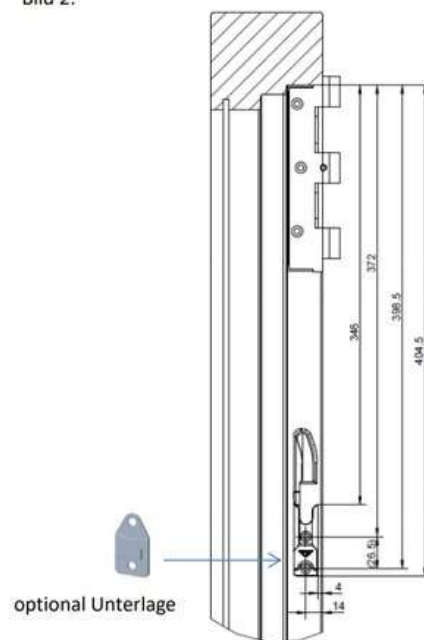
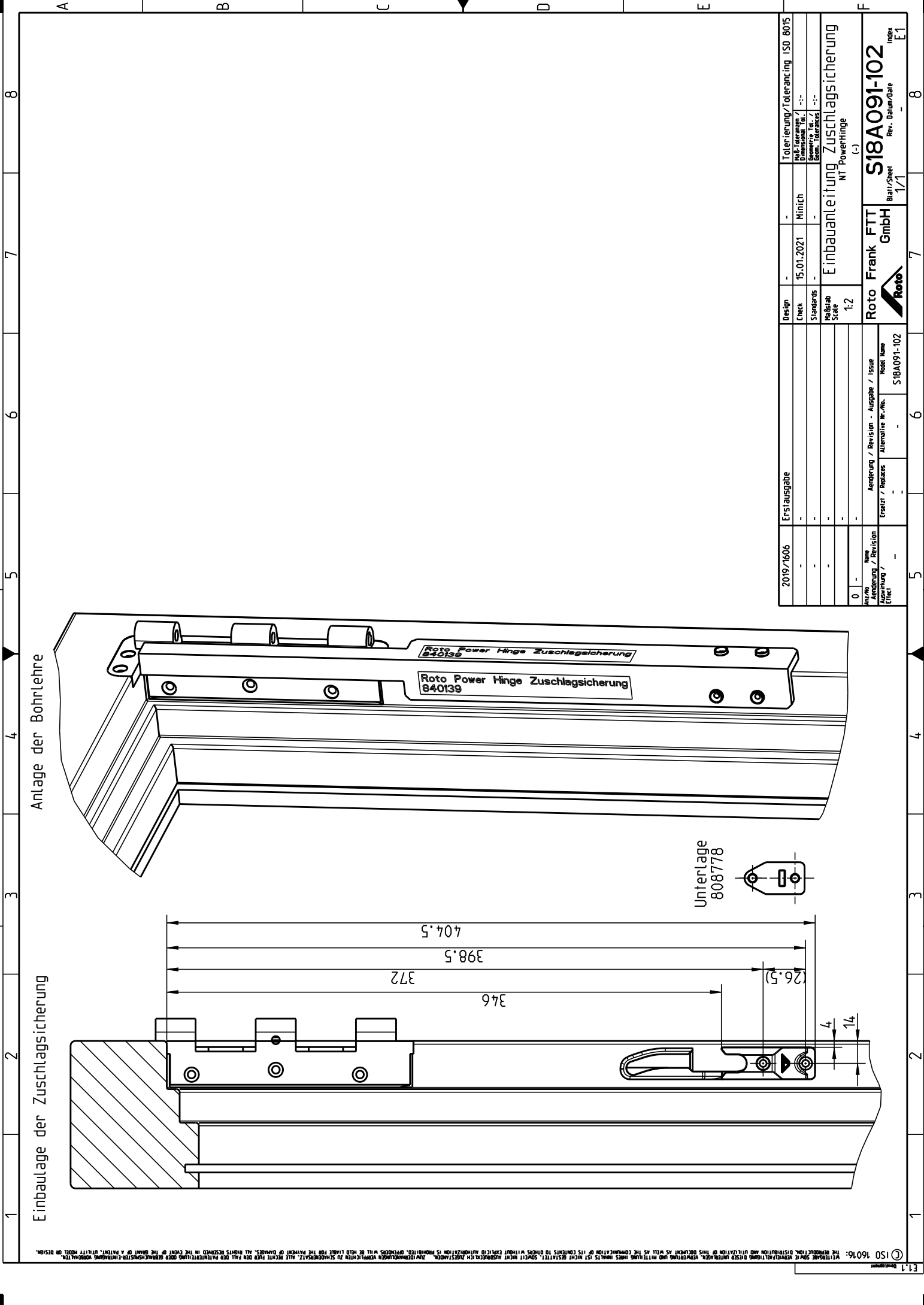


Bild 2:





ISO 16016: THE REPRODUCING OR DISTRIBUTION OF THIS DOCUMENT OR PARTS THEREOF, WITHOUT ANY INDICATION OF COPYRIGHT OR PERMISSION TO REPRODUCE OR TRANSMIT IN ANY FORM OR BY ANY MEANS, IS PROHIBITED. ANY REPRODUCTION OR TRANSMISSION OF THIS DOCUMENT OR PARTS THEREOF, WITHOUT ANY INDICATION OF COPYRIGHT OR PERMISSION TO REPRODUCE OR TRANSMIT IN ANY FORM OR BY ANY MEANS, IS PROHIBITED. ANY REPRODUCTION OR TRANSMISSION OF THIS DOCUMENT OR PARTS THEREOF, WITHOUT ANY INDICATION OF COPYRIGHT OR PERMISSION TO REPRODUCE OR TRANSMIT IN ANY FORM OR BY ANY MEANS, IS PROHIBITED. ANY REPRODUCTION OR TRANSMISSION OF THIS DOCUMENT OR PARTS THEREOF, WITHOUT ANY INDICATION OF COPYRIGHT OR PERMISSION TO REPRODUCE OR TRANSMIT IN ANY FORM OR BY ANY MEANS, IS PROHIBITED.

2019/1606	Erstausgabe	-	-	-	Tolerierung/Tolerancing ISO 8015
-	-	15.01.2021	Minich	-	Abgleichung / Dimensioning
-	-	-	-	-	Normative Ref. Gen. Tolerances
-	-	-	-	-	Einbauleitung Zuschlagsicherung NT Powerhinge
0	-	-	-	1:2	(c)
Aut./No.	Name	Roto Frank FITT GmbH		S18A091-102	Index E1
Änderung / Revision	Änderung / Revision - Ausgabe / Issue	GmbH		1/1	Rev. Datum/Date
Änderung / Revision	Ersatz / Replaces	Roto		1/1	Rev. Datum/Date
Änderung / Revision	Ersatz / Replaces	S18A091-102		1/1	Rev. Datum/Date