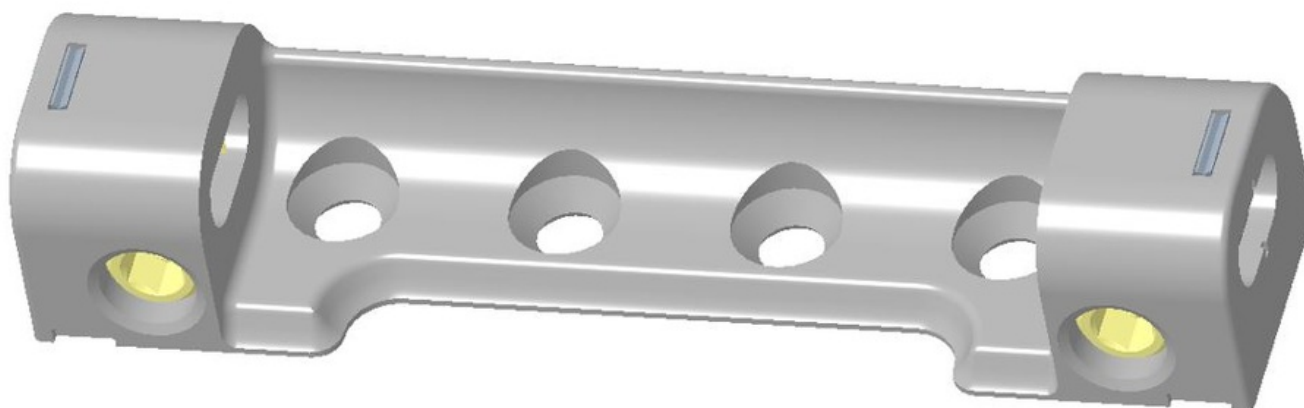


## Product Information

Product Brand: Roto NX

New stay bearing P, adjustable, for PVC profiles



### Related Products

Roto NX  
New product

### Scope

Hinge side P – stay bearings P3 and P6, adjustable, for arched windows and Tilt-Only windows

- Tilt&Turn round arched sashes up to 80 kg
- Tilt-Only sashes up to 80 kg (with restrictor and cleaning stays up to 60 kg)
- Central hinge on Turn-Only sashes up to 130 kg (P3)
- Central hinge on Turn-Only sashes up to 150 kg (P6)

New stay bearing in the Roto NX design, without visible screw fixing.

Resistance to repeated opening and closing in accordance with EN 13126-8:2017 class H3

### Technical Details

Due to the different direction of force (sash weight) of Tilt-Only sashes and round arched windows, they are designed with different drilling positions. Using the profile system 12/20-13 as an example, the stay bearing for Tilt-Only sashes is drilled into down to a depth of 22 mm – for arched windows down to a depth of 24 mm (see drawing S19A1226-059 in the appendix)

**NOTES:** the drilling positions of the adjustable stay bearing do not correspond to the drilling positions of the standard stay bearing. This means that a standard stay bearing cannot be subsequently exchanged for an adjustable stay bearing. Tilt-Only sashes should always be manufactured with an adjustable stay bearing.

### Documentation

Installation instructions for hinge side P: IMO\_455

Catalogue for hinge side P: CTL\_105

Installation instructions for stay bearing P, adjustable: SUG\_42

#### Availability / Ordering ability

- NX AX LAG P3 VES, NX AX LAG P6 VES and NX ADK AX LAG P VES\_R072 (840422) available from 2021

- NX ADK AX LAG P VES (material no.: 840406 - 840421) and NX ADK AX LAG P VES\_SF (840423) available from September 2021

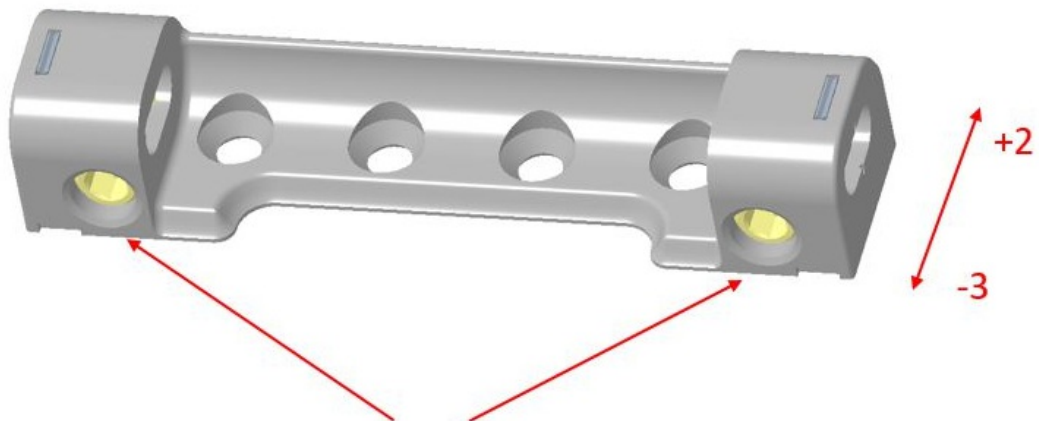
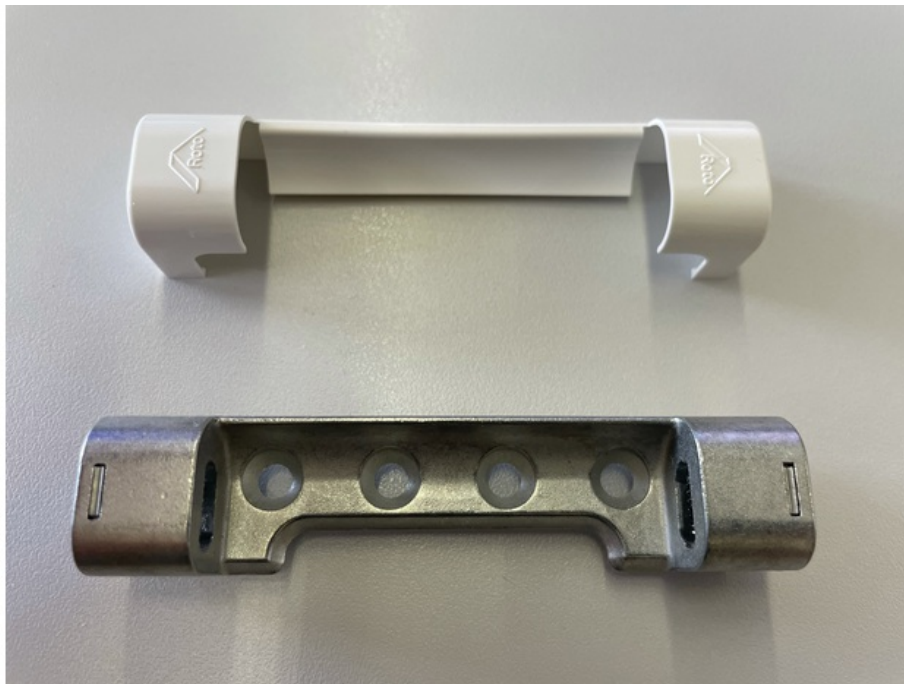
**JIGS:** serial numbers for 3D prints, September 2021: S19A1226-053P drilling jig for Tilt-Only hinge NX P3; S19A1226-061P drilling jig for Tilt-Only hinge NX P6; S19A1226-055P drilling jig for butt hinge stay bearing NX P3; S19A1226-063P drilling jig for butt hinge stay bearing NX P6.

#### SAP numbers for series, quarter 1/2022

#### Product Overview

Material No.	EAN no.	Description	PU	Price/Pcs.	Material Si ze	D-MG	Spout Mater ial
840384	4036263472151	NX AX LAG P3 VES_SIL	100		20		
840401	4036263471970	NX AX LAG P3 VES_R072	50		20		
840402	4036263471987	NX AX LAG P3 VES_R013	50		20		
840403	4036263471994	NX AX LAG P6 VES_SIL	100		20		
840404	4036263472007	NX AX LAG P6 VES_R072	50		20		
840405	4036263472212	NX AX LAG P6 VES_R013	50		20		
840406	4036263472229	NX ADK AX LAG P VES_R011	100		20		
840407	4036263472236	NX ADK AX LAG P VES_R012	100		20		
840408	4036263472243	NX ADK AX LAG P VES_R013	100		20		
840409	4036263472250	NX ADK AX LAG P VES_R031	100		20		
840415	4036263472267	NX ADK AX LAG P VES_R032	100		20		
840417	4036263472281	NX ADK AX LAG P VES_R043	100		20		
840418	4036263472298	NX ADK AX LAG P VES_R044	100		20		
840419	4036263472304	NX ADK AX LAG P VES_R053	100		20		
840420	4036263472311	NX ADK AX LAG P VES_R055	100		20		
840421	4036263472328	NX ADK AX LAG P VES_R073	100		20		
840422	4036263472335	NX ADK AX LAG P VES_R072	100		20		
840423	4036263472342	NX ADK AX LAG P VES_SF	100		20		

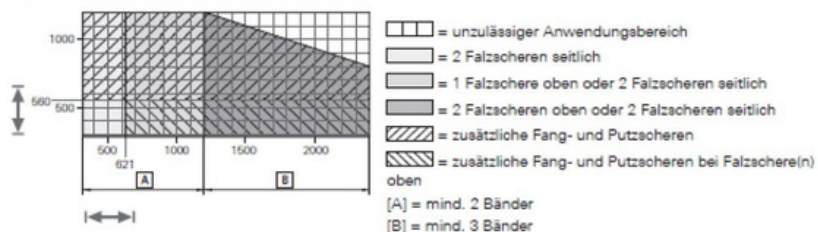
More Pictures:



Auf gleichmäßiges Verstellen achten

Anwendungsdiagramm Kippfenster:




3.3.4 Kipp-Beschlag Rechteckfenster



Die Angaben im Anwendungsdiagramm bezeichnen das Glasgewicht in kg/m<sup>2</sup>.

1 mm/m<sup>2</sup> Glasdicke = 2,5 kg

Anwendungsbereich

Grundsicherheit		
	Flügelalzbreite	310 - 2400 mm <sup>[1]</sup>
	Flügelalzhöhe	290 - 1200 mm
	Flügelgewicht	max. 80 kg

Anwendungsdiagramm Rundbogenfenster:

3.3.3 Drehkipp-Beschlag Rundbogenfenster



Die Angaben im Anwendungsdiagramm bezeichnen das Glasgewicht in kg/m<sup>2</sup>.

1 mm/m<sup>2</sup> Glasdicke = 2,5 kg

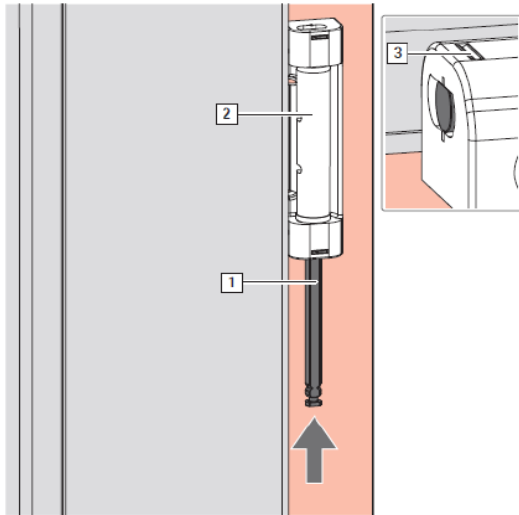
**i** **INFO**  
Der Radius (R) des Rundbogenfensters muss der Hälfte der FFB entsprechen.

Anwendungsbereich

Grundsicherheit		
	Flügelalzbreite	400 - 1300 mm
	Flügelalzhöhe	500 - 1900 mm
	Flügelgewicht	max. 80 kg

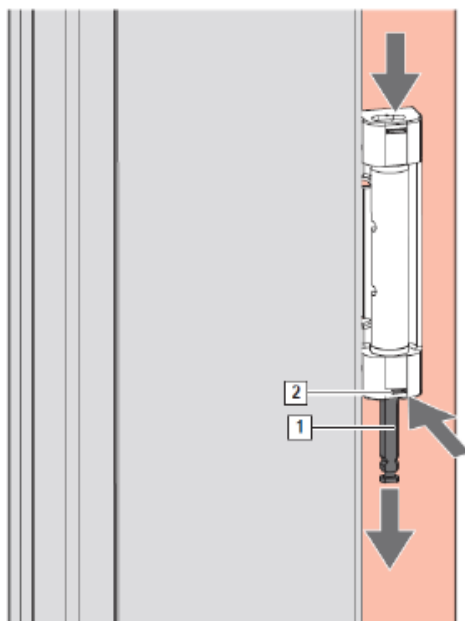
Ensure that the stay-bearing pin is installed / dismantled correctly.

### Installation:

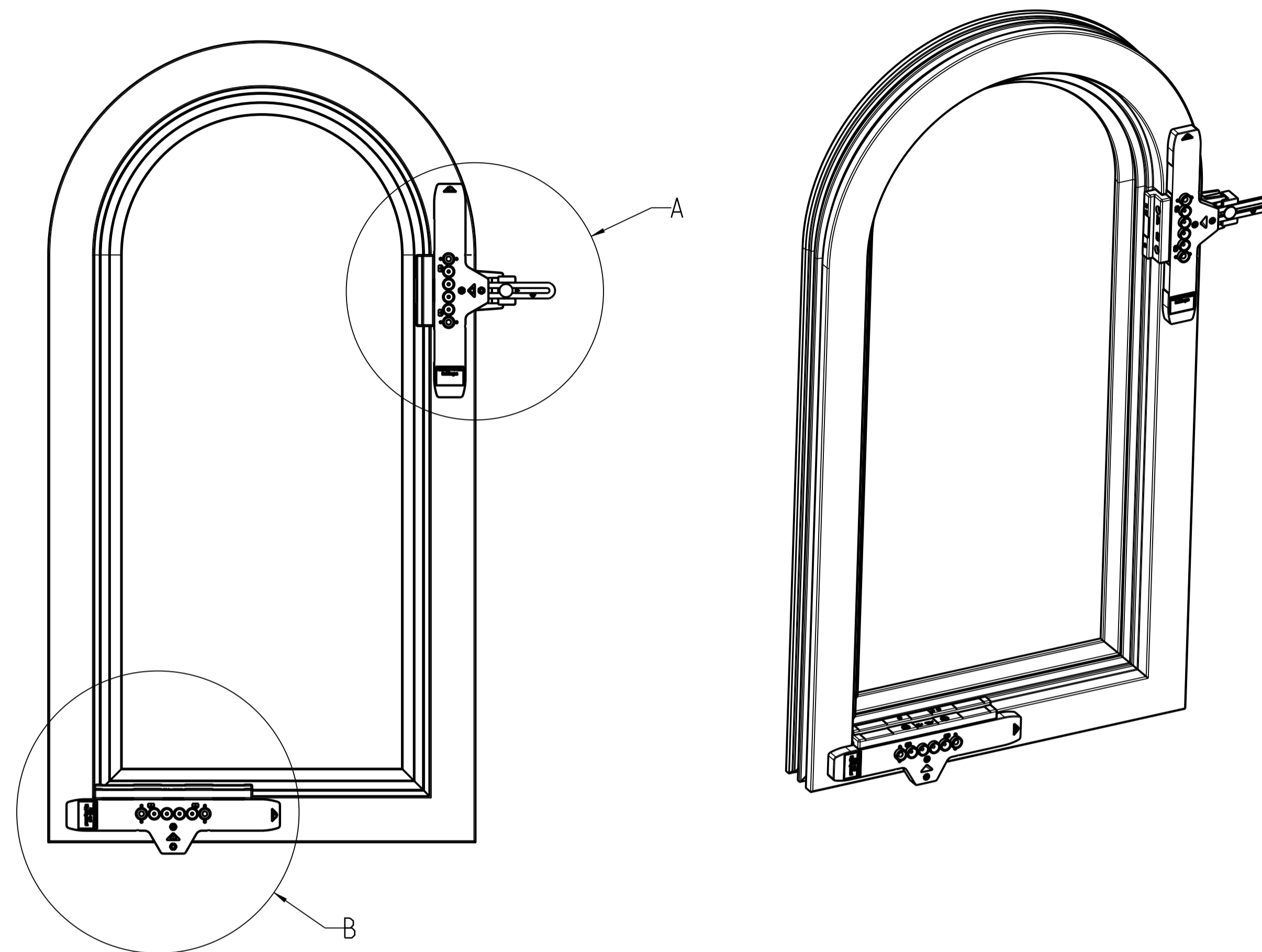


The stay-bearing pin (1) must be inserted flush into the stay bearing (2). The pin has not reached the end position until the locking element (3) is flush with the top of the bearing. The stay-bearing pin only engages in a locking element.

### Dismantling:

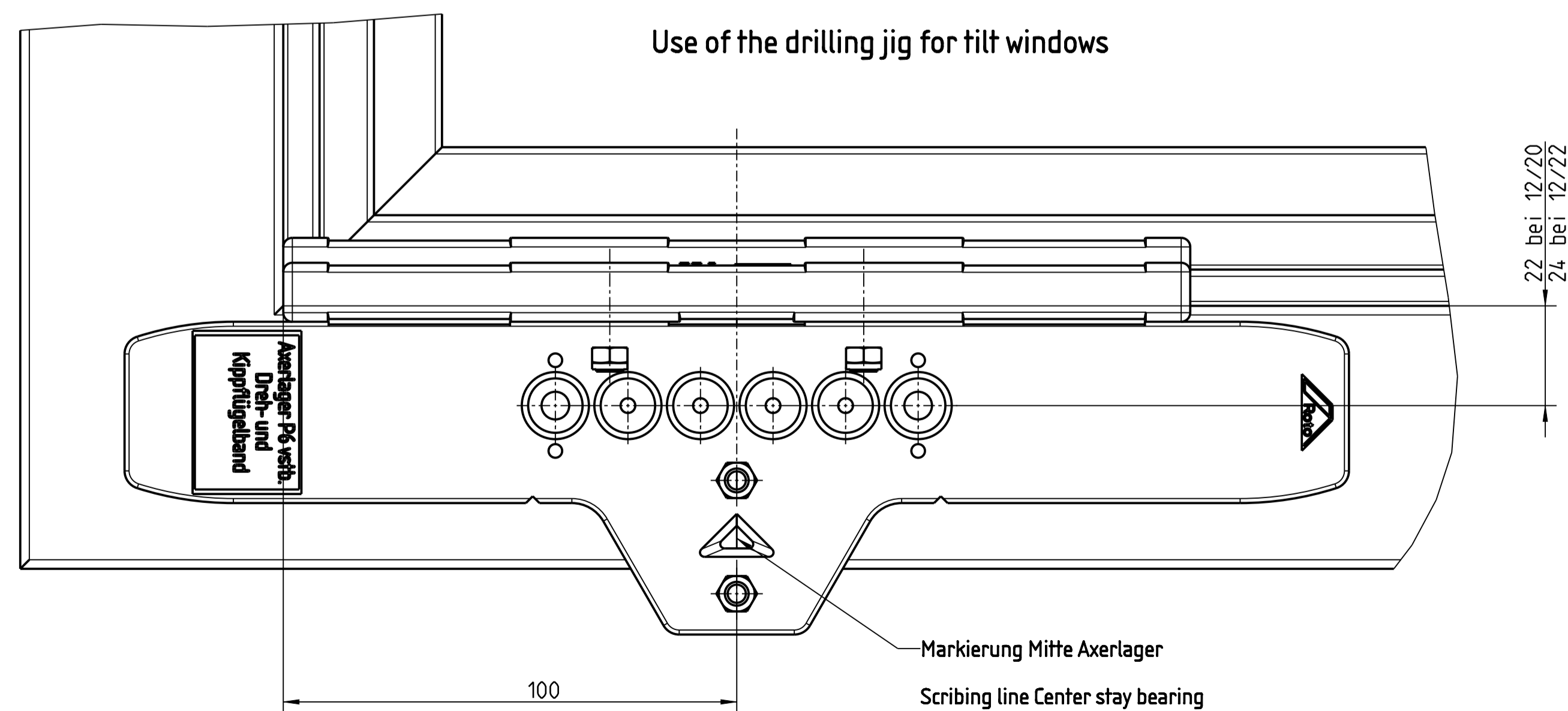


Press down on the locking element (2) with a tool (such as a screwdriver) while slightly pushing out the stay-bearing pin (1) with an extractor handle.



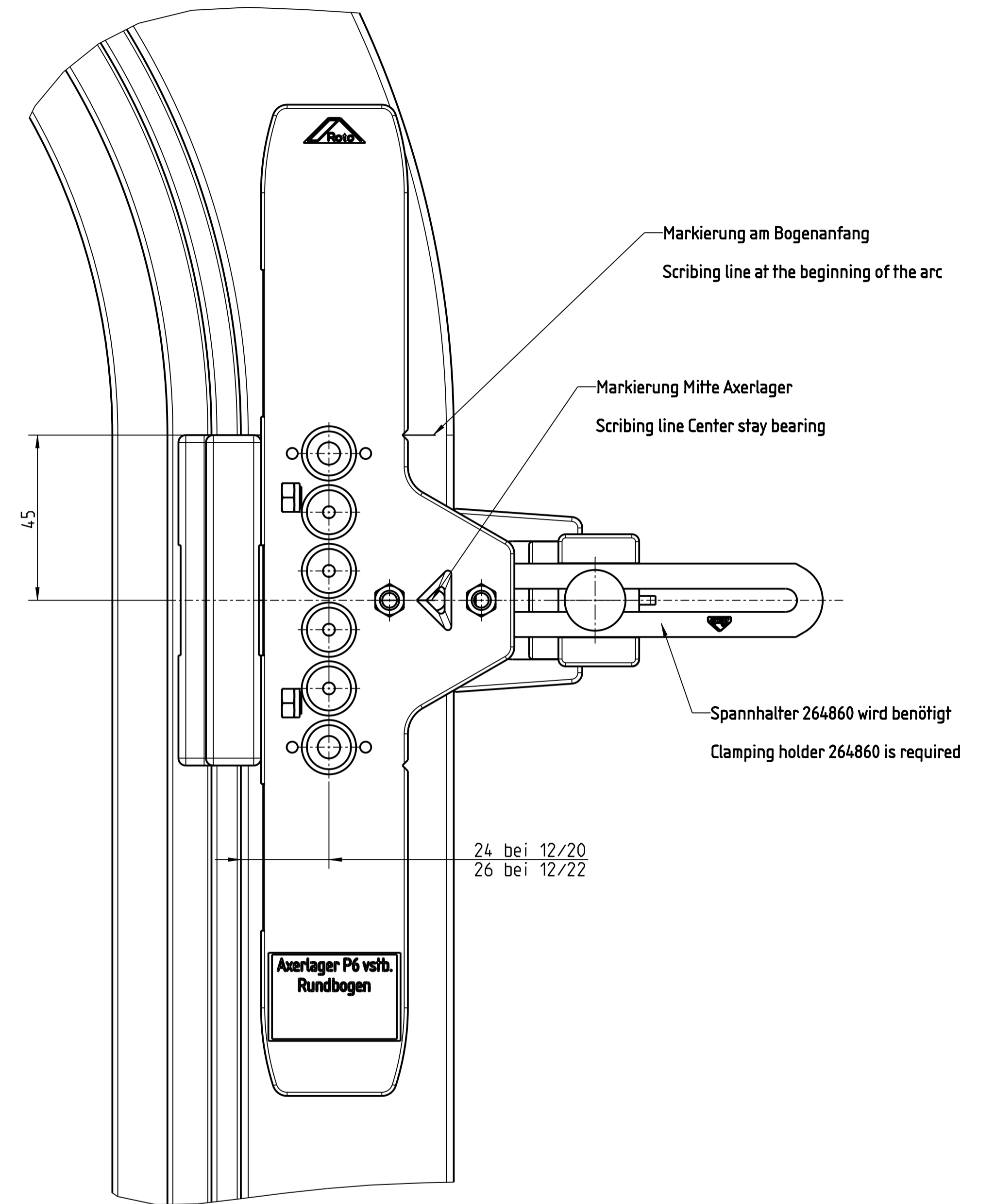
B  
1:1

Verwendung der Bohrlehre für Kippfenster  
Use of the drilling jig for tilt windows



Markierung Mitte Axerlager  
Scribing line Center stay bearing  
Spannhalter 264860 empfohlen  
Clamping holder 264860 recommended

A  
1:1  
Verwendung der Bohrlehre für Rundbogen  
Using the drilling jig for round arches



Durch Umschrauben der Anschläge für Systeme 12/20 und 12/22 geeignet  
By turning the stops suitable for systems 12/20 and 12/22

2019/1226	Erstausgabe	Design	-	-	Tolerierung/Tolerancing ISO 8015
-	-	Check	24.08.2021	Minich	2D-Prüfung / 2D-Check / 2D-Inspection
-	-	Standards	-	-	2D-Prüfung / 2D-Check / 2D-Inspection
-	-	Maßstab Scale	1:5	-	Anwendung Bohrlehre RB und Kipp Verstellbares Axerlager P
0	-	-	-	-	(-)
Name		Änderung / Revision - Ausgabe / Issue		Roto Frank FTT	
Änderung / Revision		Erstellt / Prepared		S19A1226-059	
Effekt		Alternativ W.P.Nr.		Roto GmbH	
				Blatt/Sheet 1/1	
				Rev. Datum/Date Index E1	