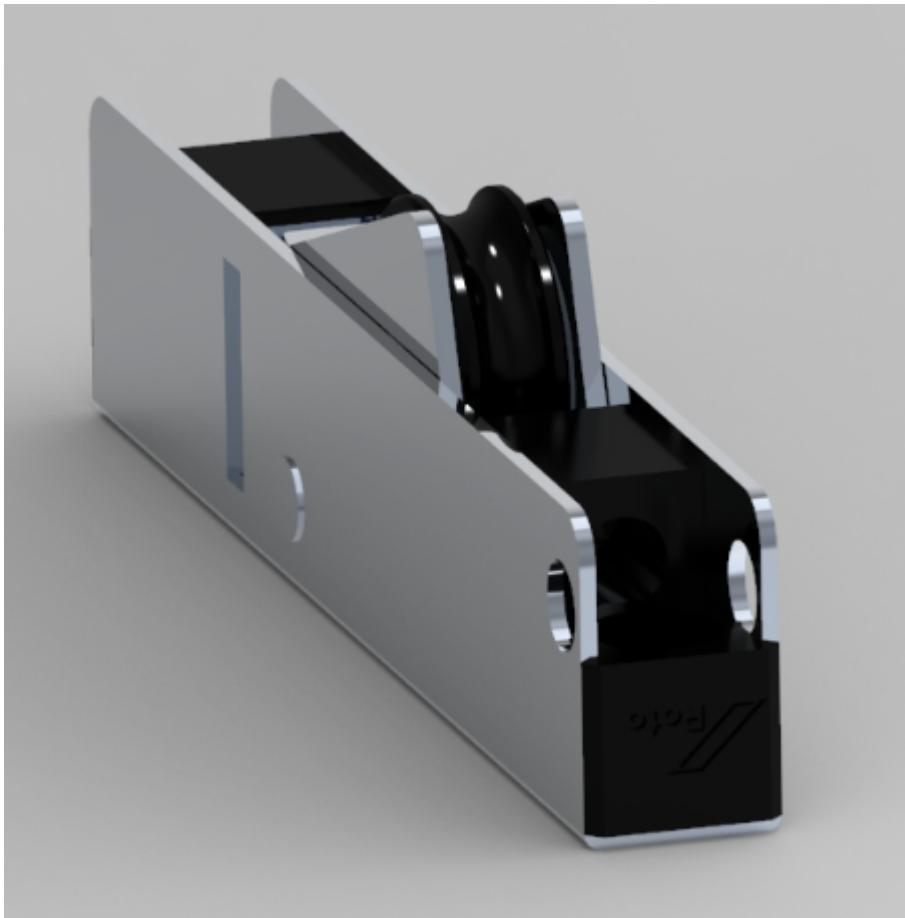


Product Information

Roto Inline Sliding single roller unit 40 kg adjustable



Overview

System

Sliding

Product

Roto Inline

The hardware system for basic sliding windows and sliding doors

Availability / Ordering ability

orderable and available on stock in Leinfelden

Documentation

The roller unit will be included in the next version of the installation instruction.

IMO_534: Roto Inline Sliding installation instruction for timber, PVC and aluminium profiles

Description

Roto has added a new Inline Sliding single roller unit to the product range. The single roller unit offers great advantages due to its height adjustability and its high load capacity with a maximum of 40 kg per roller unit.

2000014 INL SINGLE BOGIE 40KG ADJ

- weight per single roller unit: max. 40 kg
- 2 Single roller units per sash: sash weight max. 80 kg
- Max. 2 single roller units per sash allowed.
- Corrosion resistance according to DIN EN 1670 class 4 (240h)
- Functional durability according to DIN EN 13126 – 15 class H3 (20.000 cycles)
- for round track R2.5
- with screw locking

Adjustable roller unit

- Lowest position complete height roller unit: 19.9 mm (delivery position)
- Upper position complete height roller unit: 27.3 mm

When assembling the roller units, it must be ensured that the force on individual roller unit is evenly distributed. The roller units must be loaded with the glass weight in the middle/ over the entire area, and it is not permitted to load the roller on one side.

The dimensions of the single roller unit is shown in the data drawing 2000014_d.

Article Overview

Article Code	EAN No.	Unit	Material Group
2000014 INL SINGLE LAUFWAGEN 40KG VES	4036263494627	90	



Roto Frank Fenster- und Türtechnologie GmbH
Wilhelm-Frank-Platz 1
70771 Leinfelden-Echterdingen
Deutschland